

THE CONNECTED PAST – HERAKLION 2022

31 Αυγούστου – 2 Σεπτεμβρίου / August 31 – September 2

Πολιτιστικό – Συνεδριακό Κέντρο Ηρακλείου / Cultural – Conference Center of Heraklion

ΠΡΟΓΡΑΜΜΑ ΕΡΓΑΣΤΗΡΙΟΥ / WORKSHOP PROGRAMME

ΤΡΙΤΗ 30 ΑΥΓΟΥΣΤΟΥ / TUESDAY 30 AUGUST 2022

12:00-14:00 *An introduction to network science in archaeology and history. Key concepts, methods, and history of research*

Tom Brughmans

14:00-14:30 ΔΙΑΛΕΙΜΜΑ / COFFEE BREAK

14:30-15:30 *The Vistorian tutorial: import network data, visualization, exploration*

Tom Brughmans

15:30-16:30 *Applied examples of network research: personal experiences, advantages, pitfalls*

- Lecture by Anna Collar
- Lecture by Fiona Coward

ΤΕΤΑΡΤΗ 31 ΑΥΓΟΥΣΤΟΥ / WEDNESDAY 31 AUGUST 2022

10:00-12:00 *Exploratory network analysis with Visone. Import archaeological data as network, network visualisation, network analysis*

Tom Brughmans

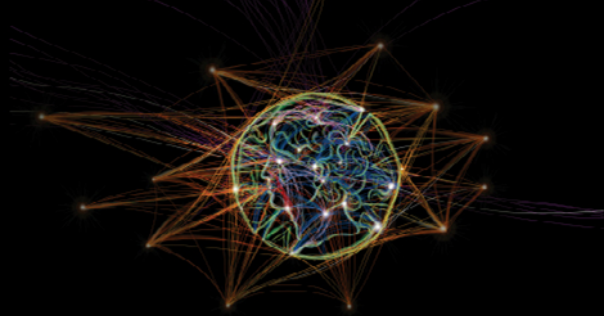
12:00-13:00 ΔΙΑΛΕΙΜΜΑ / LUNCH BREAK

13:00-14:30 Tutorial by Tim Evans

14:30-15:00 ΔΙΑΛΕΙΜΜΑ / COFFEE BREAK

15:00-16:00 *Applied examples of network research: personal experiences, advantages, pitfalls*

- Lecture by Carl Knappett



THE CONNECTED PAST – HERAKLION 2022

31 Αυγούστου – 2 Σεπτεμβρίου / August 31 – September 2

Πολιτιστικό – Συνεδριακό Κέντρο Ηρακλείου / Cultural – Conference Center of Heraklion

Δίκτυα στην αρχαιολογία του Αιγαίου

Networks in the archaeology of the ancient Aegean

ΠΡΟΓΡΑΜΜΑ ΣΥΝΕΔΡΙΟΥ / CONFERENCE PROGRAMME

ΤΕΤΑΡΤΗ 31 ΑΥΓΟΥΣΤΟΥ / WEDNESDAY 31 AUGUST 2022

19:00 Χαιρετισμοί / Introductory remarks

Στέλλα Μανδαλάκη, Προϊσταμένη του Αρχαιολογικού Μουσείου Ηρακλείου

Stella Mandalaki, Director of Heraklion Archaeological Museum

Στέλλα Αρχοντάκη – Καλογεράκη, Αντιδήμαρχος Παιδείας Δήμου Ηρακλείου

Stella Arhondaki-Kalogeraki, Deputy Mayor of Education, Heraklion

Tom Brughmans, Fiona Coward and Anna Collar

Introducing ‘The Connected Past’

Carl Knappett

The Connected Past and Networks in the Archaeology of the Ancient Aegean

Εναρκτήρια δεξίωση / Opening reception

ΠΕΜΠΤΗ 1 ΣΕΠΤΕΜΒΡΙΟΥ / THURSDAY 1 SEPTEMBER 2022

09:00-09:15 *Introduction: Networks in the Aegean*

Carl Knappett (University of Toronto) and Katerina Athanasaki (Heraklion Archaeological Museum)

09:15-09:45 *Times alone Matter: Modelling Terrestrial Mobility on Crete during the Late Bronze Age*

Paula Gheorghide (University of Helsinki), Henry Price (Imperial College London), Ray Rivers (Imperial College London)

09:45-10:15 *The balance of power in Bronze Age Crete: using network analysis to examine burials with arms from Middle Minoan I to Late Minoan IIIC*

Arianna Sacco (Austrian Academy of Sciences) and Josho Brouwers (independent)

10:15-10:45 *Linking the dead and the living through craft networks. Exploring the approach in Cretan cemeteries*

Borja Legarra Herrero (UCL) and Marcos Martín-Torres (University of Cambridge)

10:45-11:15 ΔΙΑΛΕΙΜΜΑ / COFFEE BREAK

11:15-11:45 *Laconian networks. A preliminary approach to the diffusion and distribution system of Laconian pottery in the South Aegean area (6th-5th century BC)*

Adrien Delahaye (Ecole Française d'Athènes)

11:45-12:15 *Social Network Analysis and the centrality of Delos: Diachronic trade networks and their correlation with the diffusion of art and architecture*

Dermot Grant (Trinity College Dublin)

12:15-12:45 *Setting the community table: Measuring social networks' impact on wine consumption practices on the Datça Peninsula (c. 400–100 BCE)*

Sarah T. Wilker (Dept of Classics, Stanford University)

12:45-13:00 ΣΥΖΗΤΗΣΗ / DISCUSSION

13:00-15:00 ΔΙΑΛΕΙΜΜΑ / LUNCH BREAK

ΣΥΝΕΔΡΙΑ ΣΤΟ ΑΡΧΑΙΟΛΟΓΙΚΟ ΜΟΥΣΕΙΟ ΗΡΑΚΛΕΙΟΥ
SESSION AT THE ARCHAEOLOGICAL MUSEUM OF HERAKLION

15:00-15:30 *Deceiving appearances: Indirect trade in archaeological network analyses*

Daniela Greger (University of Lausanne, Swiss National Research Foundation)

15:30-16:00 *Neopalatial administrative networks: the case of the 'replica' rings*

Artemis Karnava (University of Crete) and Maria Anastasiadou (University of Vienna)

16:00-16:30 *Households and non-palatial networks in southern Aegean craft production: some thoughts*

Natalie Abell (University of Michigan)

16:30-17:00 ΔΙΑΛΕΙΜΜΑ / COFFEE BREAK

17:00-17:30 *Classical Atlas: A Python Package for Classical Open-Source Geospatial Datasets*

Annie Lamar (Dept of Classics, Stanford University)

17:30-18:00 *Interlinking Exchange: A view from the Hinterland*

Johanna Hilpert, Tim Kerig, and Benjamin Serbe (Cluster of Excellence ROOTS, Christian Albrechts University, Kiel)

18:00-18:15 ΣΥΖΗΤΗΣΗ / DISCUSSION

19:00 ΞΕΝΑΓΗΣΗ ΣΤΟ ΑΡΧΑΙΟΛΟΓΙΚΟ ΜΟΥΣΕΙΟ ΗΡΑΚΛΕΙΟΥ – ΔΕΞΙΩΣΗ

VISIT TO THE ARCHAEOLOGICAL MUSEUM OF HERAKLION – RECEPTION

ΠΑΡΑΣΚΕΥΗ 2 ΣΕΠΤΕΜΒΡΙΟΥ / FRIDAY 2 SEPTEMBER 2022

09:00-09:30 *Modeling the Connections Between Material Culture Networks and Social Interaction*

Robert Bischoff and Cecilia Padilla-Iglesias (School of Human Evolution and Social Change, Arizona State University)

09:30-10:00 *Micro-Regions and Networks in the Cyclades: A View from Kea*

Joanne M. A. Murphy (University of North Carolina Greensboro), Natalie Abell (University of Michigan), Shannon Lafayette Hogue (University of Massachusetts Amherst), Margarita Nazou (National Hellenic Research Foundation), Christina Papoulia (University of Ioannina), Myrto Georgakopoulou (STARC, The Cyprus Institute), and Jami Craig (Florida State University)

10:00-10:30 *(Very) Small Islands in the Maritime Networks of the Bronze Age Cyclades*

Alex R. Knodell (Carleton)

10:30-11:00 *The Iron Age Cyclades and Crete: Different Approaches to Connectivity Speculatively Related to Food Security*

Doug Forsyth (University of St. Andrews)

11:00-11:30 ΔΙΑΛΕΙΜΜΑ / COFFEE BREAK

11:30-12:00 *Harbours and Hinterlands: Networks of Mobility in Mycenaean Greece*

Max MacDonald (University of Southampton)

12:00-12:30 *Mycenaean Thessaly in the Late Bronze Age: Using network theory to understand political organization*

Samantha Mills (Macquarie University)

12:30-13:00 *Regional Networks and Local Recipes for Complexity: Presenting a new project on Central Greek Middle Bronze Age networks*

Christopher Mark Hale (Polish Institute of Archaeology and Ethnography)

13:00-13:15 ΣΥΖΗΤΗΣΗ / DISCUSSION

13:15-15:00 ΔΙΑΛΕΙΜΜΑ / LUNCH BREAK

15:00-15:30 *Following the oxhide ingots within Linear B texts between Aegean and East Mediterranean*

Lavinia Giorgi (Sapienza University of Rome)

15:30-16:00 *Mapping Monsters: a spatial analysis of Late Bronze Age griffins*

Emily Simons (University of Melbourne)

16:00-16:30 *A network of identities: Crete and the Aegean islands in the early Neopalatial period*

Irene Nikolakopoulou (Heraklion Archaeological Museum)

16:30-17:00 ΔΙΑΛΕΙΜΜΑ / COFFEE BREAK

17:00-17:30 *Decoding Minoan/Mycenaean Cretan data*

Ray Rivers (Imperial College London), Paula Gheorghide (University of Helsinki), Vaiva Vasiliauskate (ETH Zurich), Henry Price, and Tim Evans (Imperial College London)

17:30-18:00 *An integrated spatial and network analysis of settlement patterns and road network dynamics in Central Crete (Late Minoan II – Hellenistic period)*

Quentin Drillat (Ghent University)

18:00-18:30 *Establishing intra- and extra-regional networks in the Postpalatial period: the case study of Petras, Siteia*

Adrianos Psychas (University of Athens)

18:30-18:45 ΚΑΤΑΛΗΚΤΙΚΗ ΣΥΖΗΤΗΣΗ / CONCLUDING REMARKS