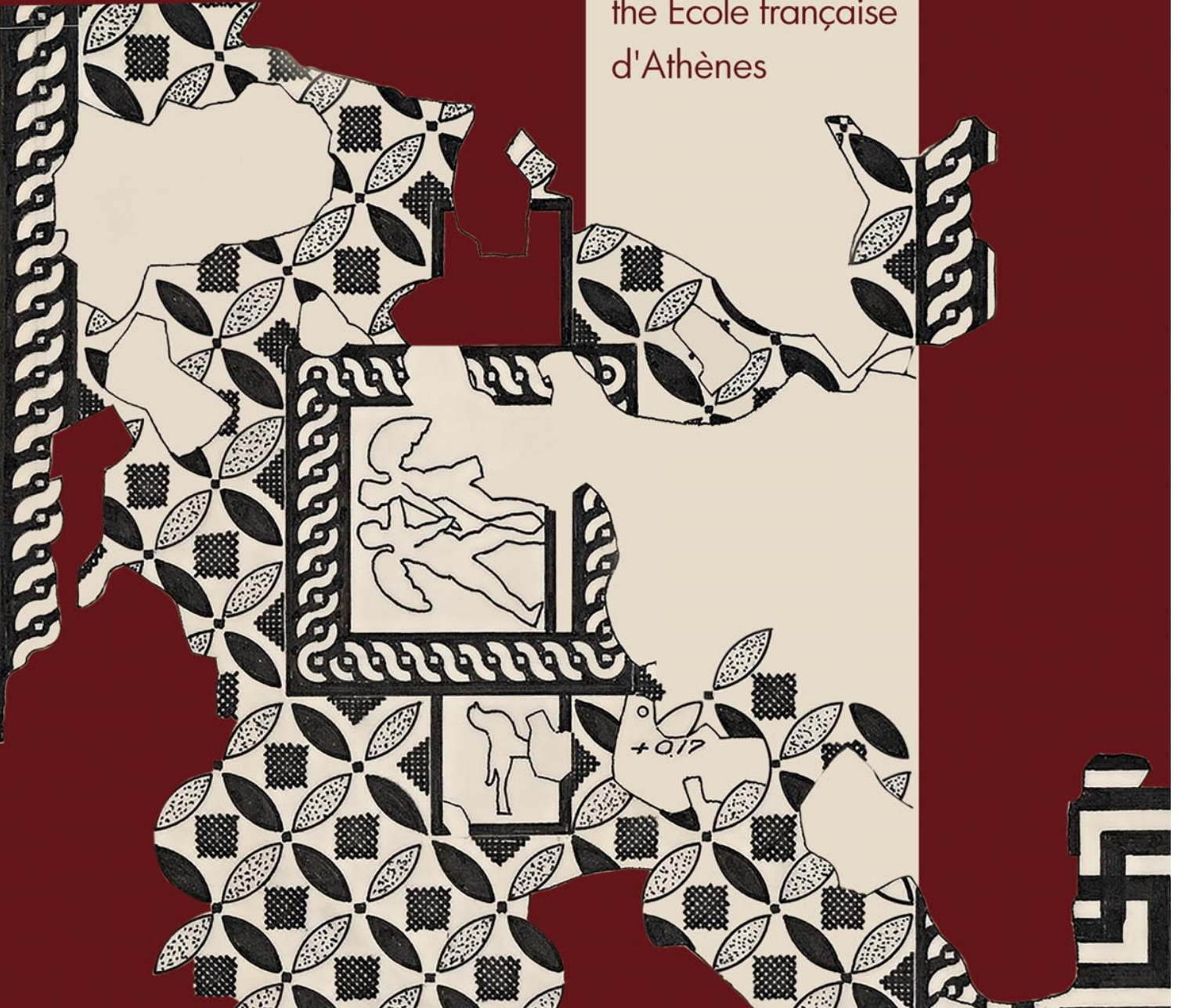


εφα

ÉCOLE FRANÇAISE D'ATHÈNES  
ΓΑΛΛΙΚΗ ΣΧΟΛΗ ΑΘΗΝΩΝ

Discover  
the École française  
d'Athènes





ÉCOLE FRANÇAISE



## The École française d'Athènes

**F**ounded in 1846, the École française d'Athènes is the first foreign institute established in Greece. With strong bases in Greece, the Eastern Mediterranean, and the Balkans, the school has been devoted for 175 years to the study of Hellenism and its diffusion from prehistoric times to the present, in all fields of archaeology and the humanities. A world-class research centre, it hosts scholars and leads innovative programs that expand our knowledge. The EFA is administered by the Ministry for Higher Education and Research and is under the academic supervision of the Académie des Inscriptions et Belles-Lettres of the Institut de France. The school is one of the Écoles françaises à l'étranger (EFE), a network of five French higher education and research establishments based abroad (Greece, Italy, Spain, Egypt and Asia).

## Objectives

**A** public research and training institution, the EFA conducts excavations and field surveys, explores archival collections, and publishes the results of its research, while maintaining longstanding partnerships with its host countries. Dedicated to the knowledge and preservation of material and immaterial cultural heritage, the School promotes the dissemination of research and the transmission of expertise. By welcoming numerous interns onto its research teams, ensuring excellent training for early-career scholars, and encouraging networking within an international research community, the École française d'Athènes trains the next generation of scholars and gives them access to the treasures of Greek culture and history.

Opposite: The main building of the École française d'Athènes EFA/E. Miari



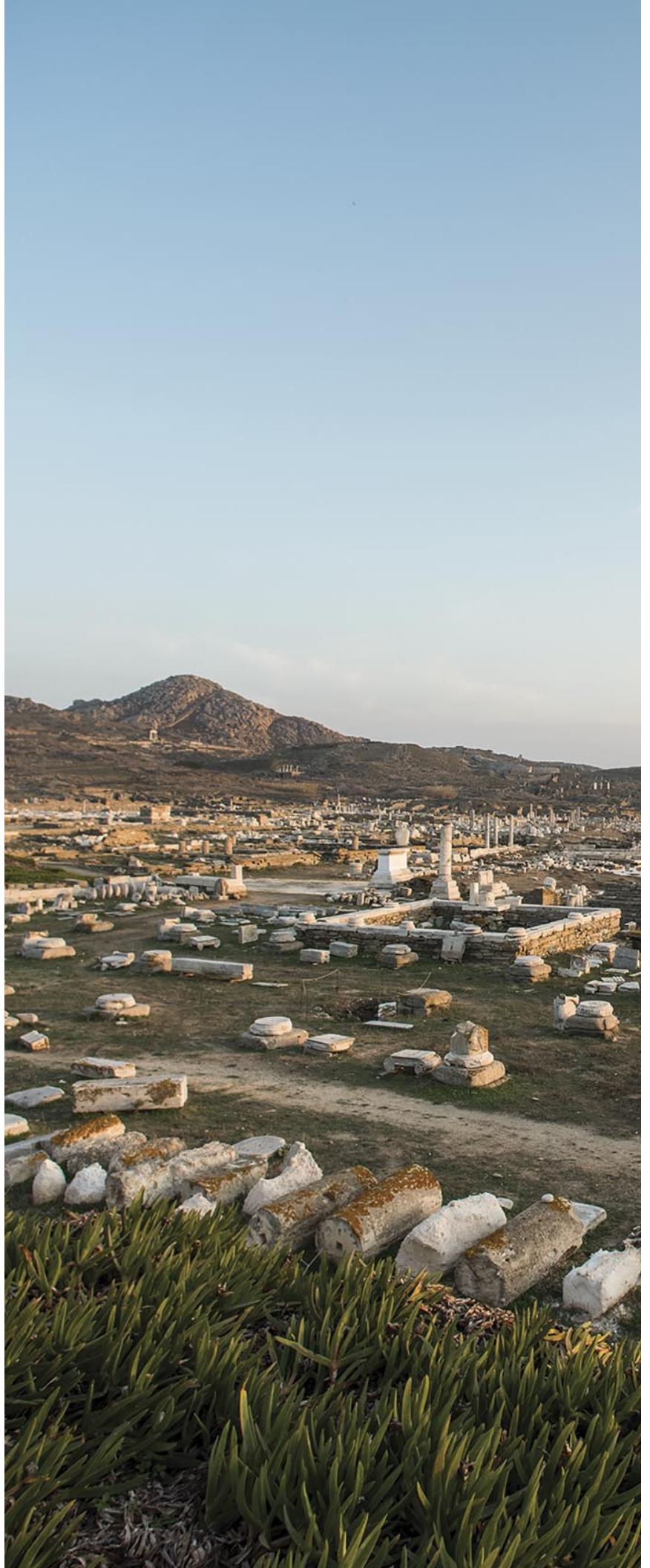
The Sanctuary of Delphi EFA/E. Miari

## The École française d'Athènes is:

- a research centre with 70 permanent team members working in 7 departments.
- a research library containing 96,000 items, including 2,600 journals, with access to cutting-edge electronic resources.
- a publisher of up to 20 volumes each year in 18 collections, 5 internationally renowned academic journals, and a catalogue of more than 600 titles in history, archaeology, epigraphy, numismatics, geography, sociology, and other disciplines.
- a unique archival collection of manuscripts, photographs, drawings, and maps from its expeditions to the sites and museums of Greece and other Mediterranean countries: 8,000 engravings, more than 657,000 photographs, 56,000 maps and drawings, 256 linear meters of handwritten documents.
- a state-of-the-art technology park supporting researchers who develop cutting-edge approaches to archaeology.
- a high-performance digital ecosystem based on interoperability and open science.
- an international research centre: the school's Athenian headquarters welcomes more than 300 researchers annually. The 7 excavation houses host members of academic expeditions during their research in the field or in museums collections.

## The École française d'Athènes is also:

- a research training centre for academic members from France and abroad, doctoral students, postdoctoral researchers and fellows from all over the world.
- an institute responsible for prestigious excavation sites: up to 10 excavations undertaken each year in Greece, Albania, and Cyprus, in collaboration with the French Foreign Ministry, the Greek, Cypriot and Albanian Archaeological Services, as well as several European universities.
- a leader in promoting collaboration between French researchers and institutions in the study of Greece, the Balkans, and the Eastern Mediterranean from the Ottoman period to the present and their foreign counterparts.
- an academic conference centre hosting a year-round program of more than 100 colloquia and specialized seminars covering the entire range of current research on Hellenism from Antiquity to the present. The School is supported by partnerships with French and foreign universities, museums, and archaeological institutes and with the French National Centre for Academic Research (CNRS).





**Sites d'implantation des missions de fouilles et d'études de l'École française d'Athènes**





## Ancient and Byzantine Studies

The Department of Ancient and Byzantine Studies is the first of the EFA's research programs and remains its chief focus. Its role is to oversee the School's archaeological missions. Around seventy are carried out annually on nearly twenty sites. Some of these excavations, such as those at Delos, Delphi, Argos, Thasos, Philippi and Malia, date to the late nineteenth century while others arose as research developed (Dikili Tash, Dreros, Lato, Anavlochos, Akraiphia, Ptoion, the Valley of the Muses, Kirrha, Aigina, Megara, Arta, Terpni, etc.). The department's chronological scope runs from prehistoric times to the Byzantine period. We carry out research in several countries outside of Greece, notably in Cyprus (Amathous, Klimonas, Nea Paphos) and in Albania (Apollonia, Sovjan, Durrës).

The School offers to mission directors the expertise of its teams and its sophisticated technical equipment (drones, laser scanners, total stations). Digital tools – such as WebSIG, accessible on the website – are constantly being improved. In partnership with the archaeological services of its host countries and thanks to multiple sponsors, the EFA also conducts restoration work on archaeological sites. In conjunction with the British School at Athens, it publishes *Archaeology in Greece Online*, a digital platform which brings together the latest news from all relevant institutions on archaeological discoveries in Greece. Furthermore, the Department of Ancient and Byzantine Studies contributes to the EFA's scientific activities by holding several series of seminars and conferences, which may be attended either on site or remotely.

Drone flight over the Archaeological Site of Philippi. EFA, 2016





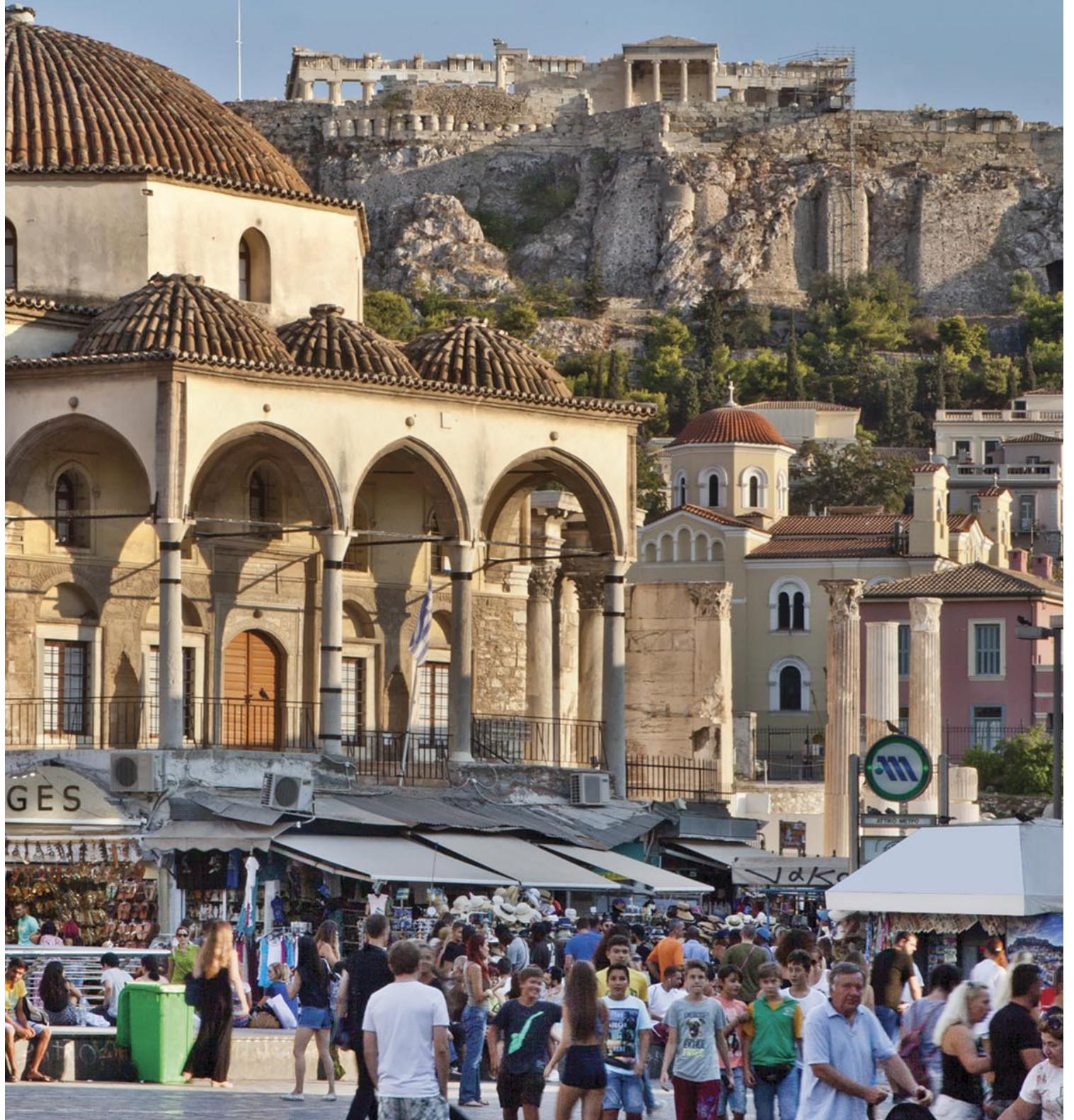
"Mobility in War" doctoral training seminar, 2019. EFA/E. Cronier  
Opposite: Monastiraki Square, Athens. EFA/E. Miari

## Modern and Contemporary Studies

Established more recently, the Department of Modern and Contemporary Studies reflects the École française d'Athènes's longstanding interest in the society in which it developed. From its inception, the EFA has sent its members throughout Greece and the Ottoman Empire to collect linguistic and ethnographic data as well as to observe the state of society. In the late 1980s, the study of early modern and contemporary Greece became a fully-fledged focus of research.

The department's programs encompass many disciplines in the humanities and social sciences, from history and sociology, to anthropology, art history, geography, and philosophy. We are also interested in the reception of Greek antiquity in later periods. Research encompasses a large geographical area extending beyond the borders of Greece into the Balkans and the Eastern Mediterranean, from the medieval period to the present. This broad spectrum allows us to grasp societies at the crossroads of multiple influences and cultural pairings in all their nuance and complexity. The Department of Modern and Contemporary Studies produces numerous databases that provide the scientific community with new and unpublished results, organizes several conferences and seminars annually, and fosters cutting-edge international research networks through numerous partnerships in its host countries.







A reading room in the Library of the École française d'Athènes. EFA/S. Renon

## Library

The library services maintain a collection of over 85,000 titles, nearly 80% of which are directly accessible to users. This outstanding collection covers all aspects of Greek archaeology and history, from prehistoric times to the Byzantine period. In addition to the archaeology of Greece, the Balkans, the Mediterranean area and the Black Sea, the archaeology of France and the Slavic countries is also well represented. The library also contains works on modern Greece and the Balkans as well as a remarkable collection of approximately one thousand volumes on papyrology. Rare documents and manuscripts round out the collection, which has been awarded the "Collection of Excellence" (Collex) label for its holdings in Classical and Byzantine studies.

In addition to its main library, the school maintains seven libraries at excavation sites, enabling research to be conducted in the field.



## Publishing

Originating from the field research of its scientific members, the editorial activity of the École française d'Athènes began in 1877 with the creation of the *Bulletin de correspondance hellénique*. More than 145 years later, the unparalleled expertise of the publications of the École française d'Athènes makes them the essential reference point for anyone interested in Greece, the Balkans, and the Eastern Mediterranean, from prehistoric times to the present. They offer more than 600 titles in history, archaeology, epigraphy, numismatics, geography, sociology as well as in the scholarship of the classics and several disciplines of the humanities and the social sciences, including those dealing with modern Greece. Since it keeps with its original vocation of disseminating research by the institution and its scientific partners, the École française d'Athènes publishes five journals and about twenty new titles annually.

The École française d'Athènes benefits from a wide French-speaking and international distribution and develops commercial networks in Europe and North America along with worldwide digital dissemination. It participates in some thirty trade shows annually. The catalogue is widely available online, with 75% of the material for free consultation, making the École française d'Athènes a leader in Open Access.

EFA/E. Miari



— Antéfixe en terre cuite —



— Delphes - 1896 —



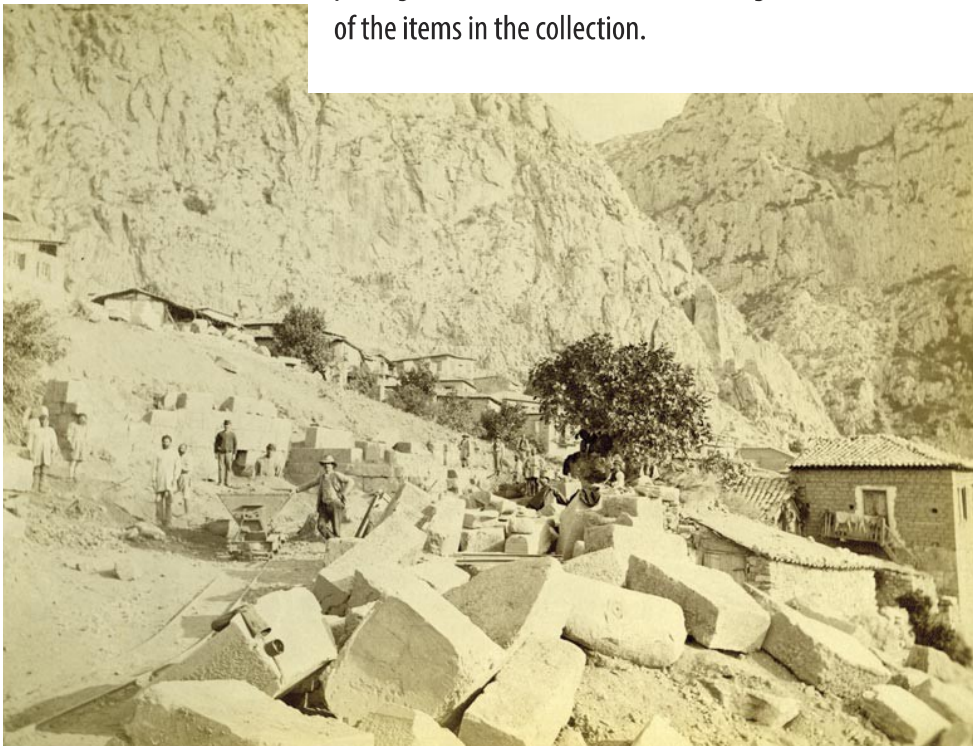
## Archives

The archival department contains the memory of our institution for 175 years. It is entrusted with maintaining all documents, physical or digital, that are produced or received by the institution or by scientific missions.

The inventories and the associated files are entered into the Archimage digital database, which is designed, in accordance with an open science policy and in compliance with all relevant laws, to make all research data available to the public. The data are also listed in national and international archive portals, such as Calames and France Archives.

Nearly 10,000 documents are digitized or photographed each year and several hundred items are restored.

The archives, whose oldest documents date back to the founding of the School in 1846, are regularly enriched by annual contributions from research teams or private donations from former members. Field notebooks, photographs, watercolours, architectural surveys, squeezes, databases, photogrammetric data, and 3D renderings reflect the richness and variety of the items in the collection.



Opposite: Eleven-leaf antefix, watercolour. EFA/A. Tournaire, 1896  
Above: Excavations at Delphi, late nineteenth century. EFA/G. Fougères



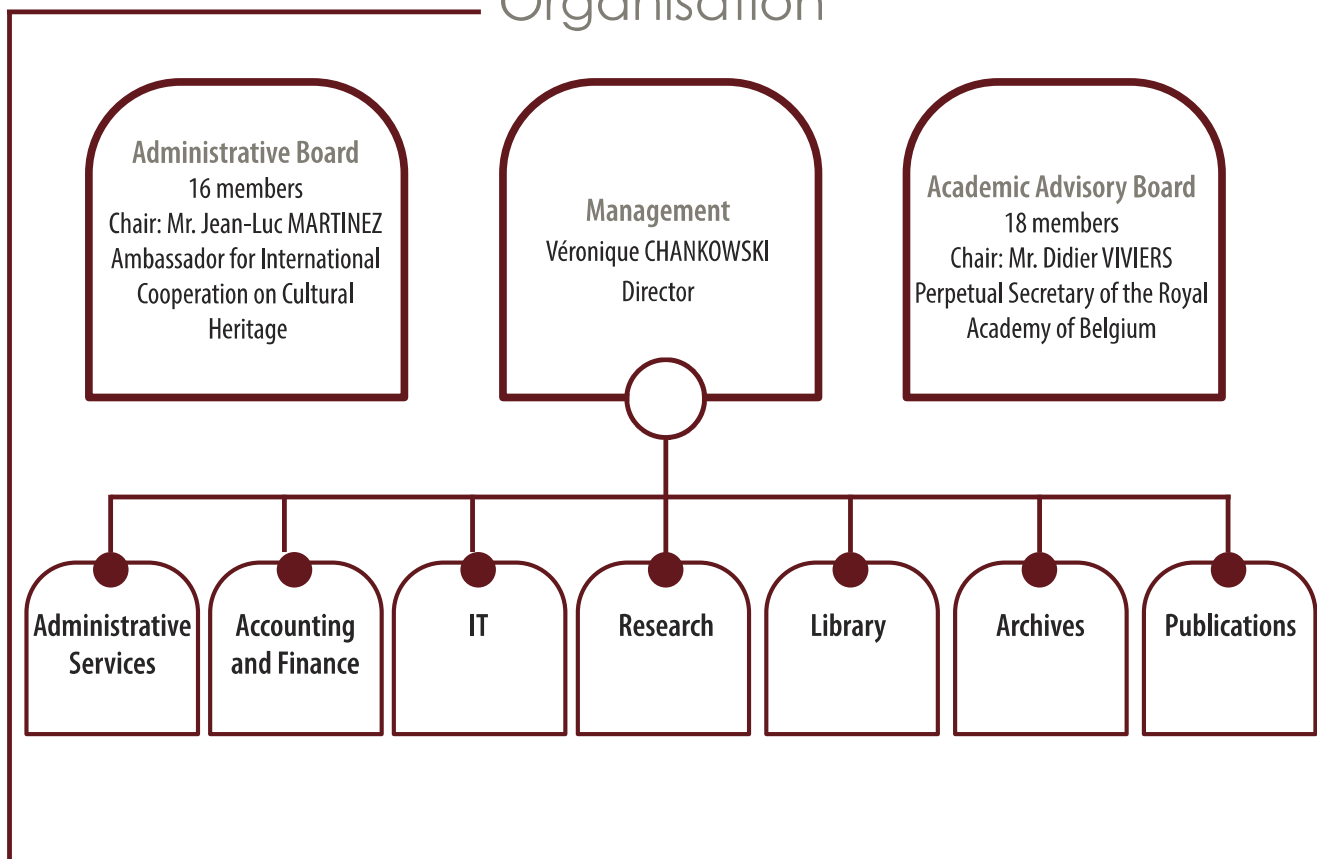
## Important Dates

- 1846 Creation of the École française d'Athènes by royal ordinance of Louis-Philippe
- 1861 Mission to Macedonia sponsored by Napoleon III
- 1873 First excavations at Delos
- 1874 Installation of the School at its current location: 6 Didotou Street, Athens
- 1877 Publication of the first volume of the *Bulletin de Correspondance Hellénique*
- 1892 First excavations at Delphi
- 1900 Creation of the Foreign Section
- 1902 First excavations at Argos
- 1911 First excavations at Thasos
- 1914 First excavations at Philippi
- 1922 First excavations at Malia
- 1975 Beginning of the French Archaeological Mission at Amathous (Cyprus)
- 1985 Creation of the Department of Modern and Contemporary Studies
- 1989 Resumption of missions in Albania
- 1997 First excavations in Bulgaria and in Crimea
- 2003 Opening of one of the initial online publication portals
- 2009 Creation, in collaboration with the British School at Athens, of the *Chronique des fouilles en ligne/Archaeology Online* which presents the results of archaeological activities in Greece
- 2011 Creation of the Archimage portal which provides online access to a selection of the School's photographic and graphic collections
- 2012 Implementation of online geo-referenced databases (geographic information systems, or GIS)
- 2013 Creation of the Video Library, a platform providing free access to videos of the School's academic events
- 2021 Adoption of an Open Science Charter
- 2022 Implementation of an Open Access policy



The main building of the École française d'Athènes EFA/E. Miari

## Organisation





εfa

ÉCOLE FRANÇAISE D'ATHÈNES  
ΓΑΛΛΙΚΗ ΣΧΟΛΗ ΑΘΗΝΩΝ

École française d'Athènes

6, Didotou Street  
GR10680 Athens  
www.efa.gr

Contact : communication@efa.gr

